

0°30'0"E

1°0'0"E

1°30'0"E

2°0'0"E

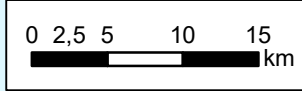
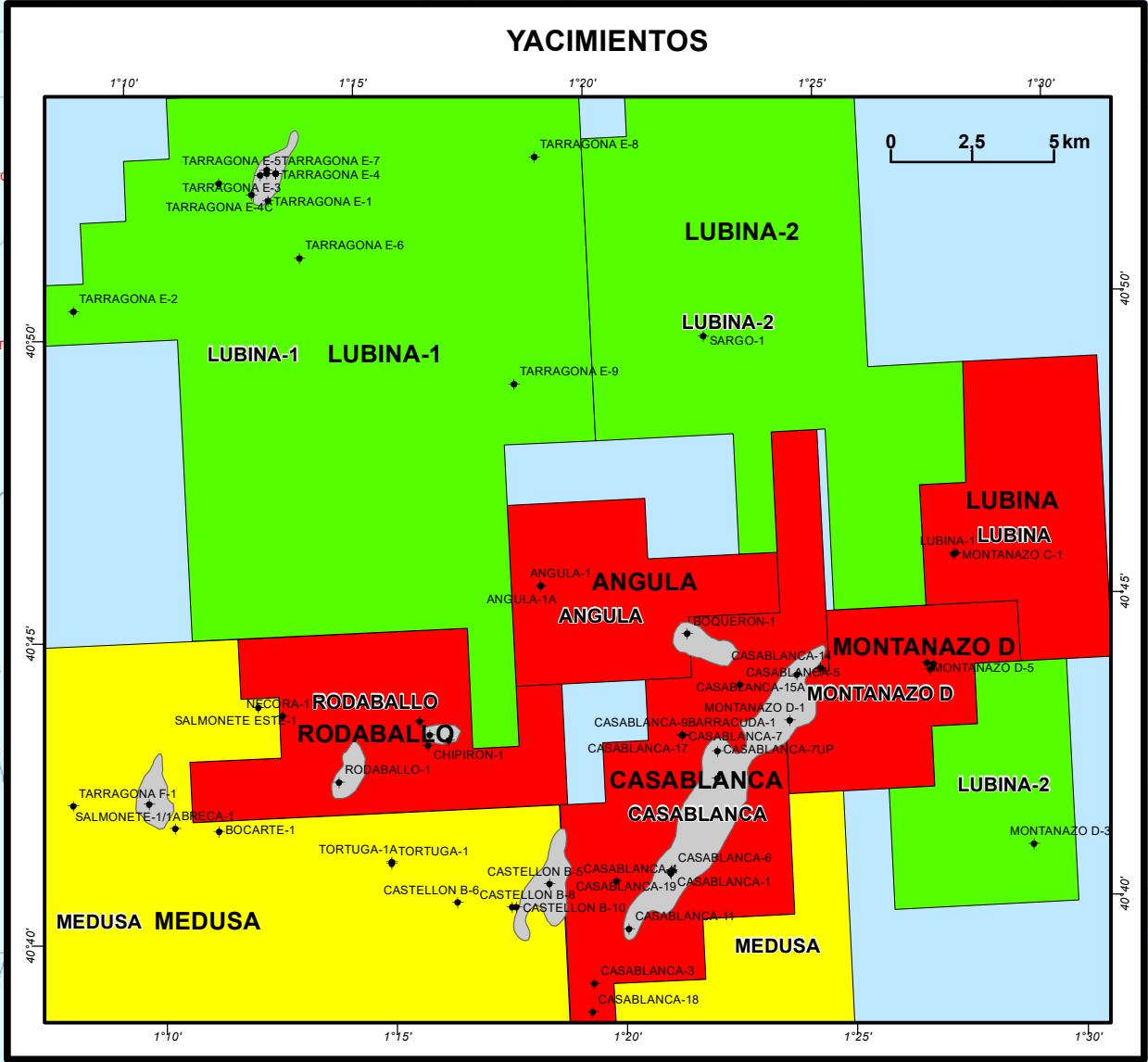
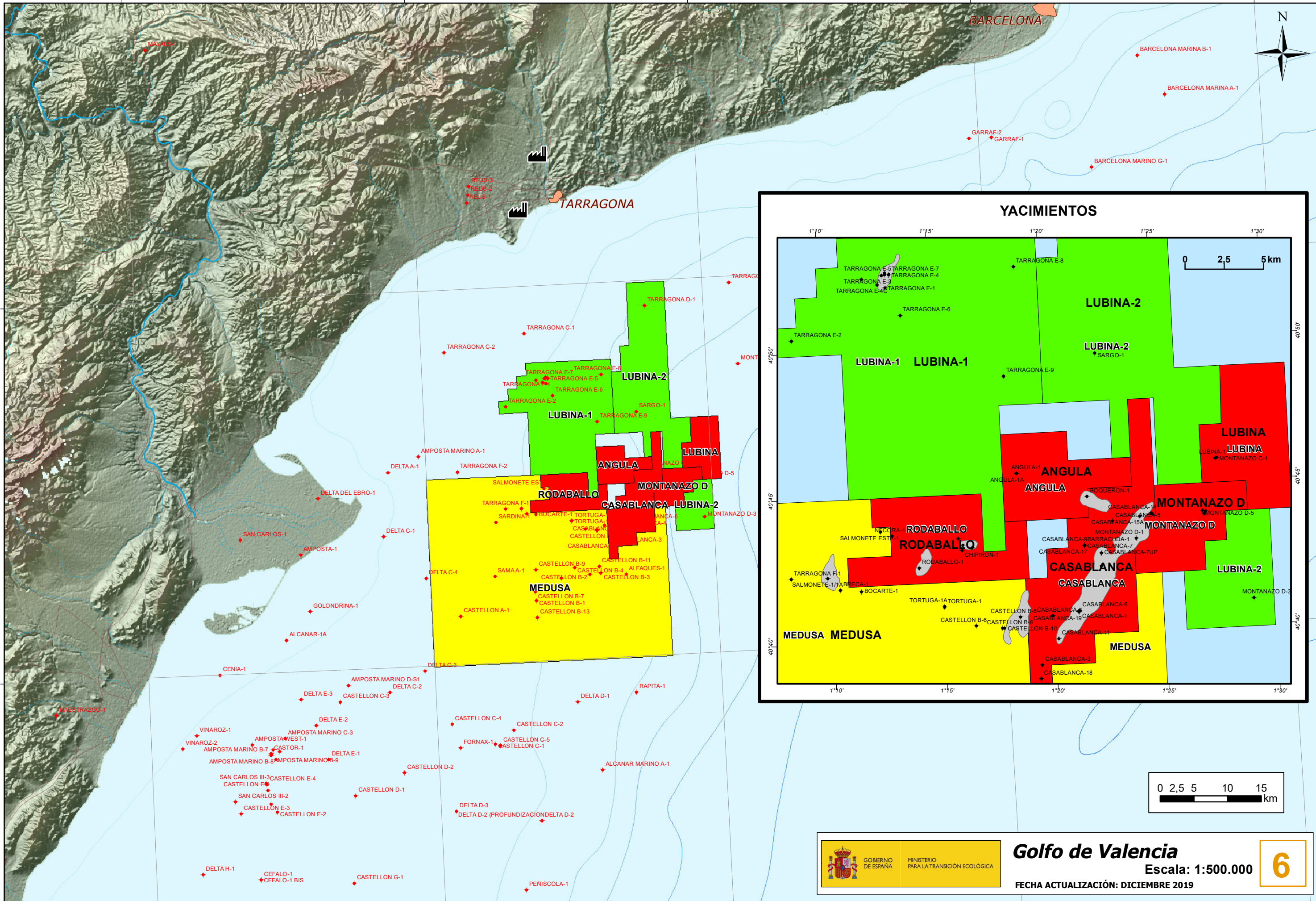
2°30'0"E

41°0'0"N

40°30'0"N

41°0'0"N

40°30'0"N



Golfo de Valencia
 Escala: 1:500.000
 FECHA ACTUALIZACIÓN: DICIEMBRE 2019

6

0°30'0"E

1°0'0"E

1°30'0"E

2°0'0"E

2°30'0"E